



# MONTHLY MEMBERSHIP PROGRESS REPORT

District 30 S

Results as of: 5/31/2014

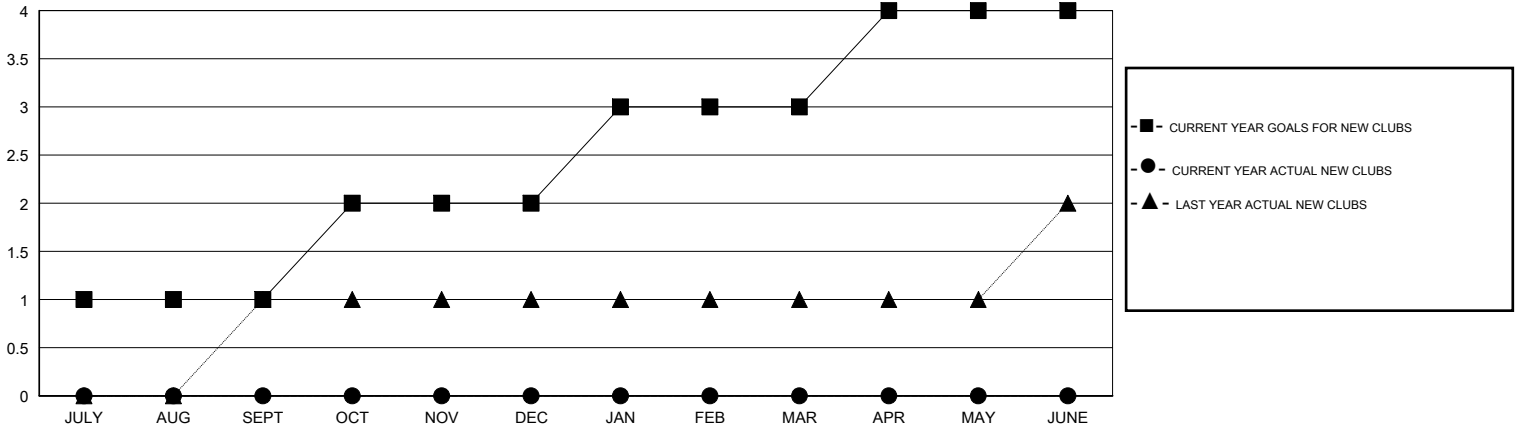
GMT: CARL HARRELL

LOCATION MISSISSIPPI

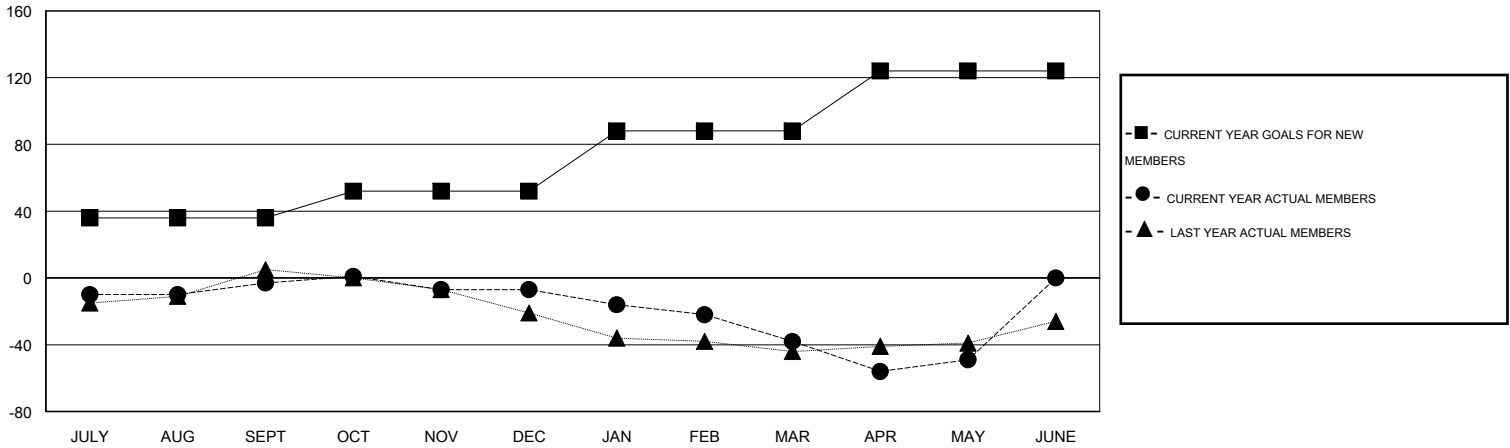
GMT CA 1

| Clubs                 |               |                  |                      |                      | Members               |                 |                            |                        |                      |
|-----------------------|---------------|------------------|----------------------|----------------------|-----------------------|-----------------|----------------------------|------------------------|----------------------|
| RESULTS FOR 2013-2014 |               |                  |                      |                      | RESULTS FOR 2013-2014 |                 |                            |                        |                      |
| QUARTER               | NEW CLUB GOAL | ACTUAL NEW CLUBS | ACTUAL DROPPED CLUBS | ACTUAL NET GAIN/LOSS | QUARTER               | NEW MEMBER GOAL | ACTUAL TOTAL MEMBERS ADDED | ACTUAL DROPPED MEMBERS | ACTUAL NET GAIN/LOSS |
| JULY/AUG/SEPT         | 1             | 0                | 1                    | -1                   | JULY/AUG/SEPT         | 36              | 43                         | 46                     | -3                   |
| OCT/NOV/DEC           | 1             | 0                | 1                    | -1                   | OCT/NOV/DEC           | 16              | 27                         | 31                     | -4                   |
| JAN/FEB/MAR           | 1             | 0                | 0                    | 0                    | JAN/FEB/MAR           | 36              | 20                         | 51                     | -31                  |
| APR/MAY/JUNE          | 1             | 0                | 0                    | 0                    | APR/MAY/JUNE          | 36              | 29                         | 40                     | -11                  |

GOALS AND ACTUAL NEW CLUBS CUMULATIVE



GOALS AND ACTUAL MEMBERS CUMULATIVE



|   |   |   |
|---|---|---|
| DROPPED CLUBS: 2  | 32 CLUBS OF 59 ADDED 1 OR MORE NEW MEMBERS            | <b>GENDER DISTRIBUTION</b><br>MALE 986 (72.61%)<br>FEMALE 372 (27.39%)      |
| <b>DROPPED MEMBERS</b><br>DECEASED 21<br>CLUB CANCELLED 0<br>OTHER 147<br>TOTAL 168 | <a href="#">CLICK HERE FOR HEALTH ASSESSMENT DATA</a> | FAMILY UNIT MEMBERS 163<br>HEAD OF HOUSEHOLD 79<br>NON-HEAD OF HOUSEHOLD 84 |